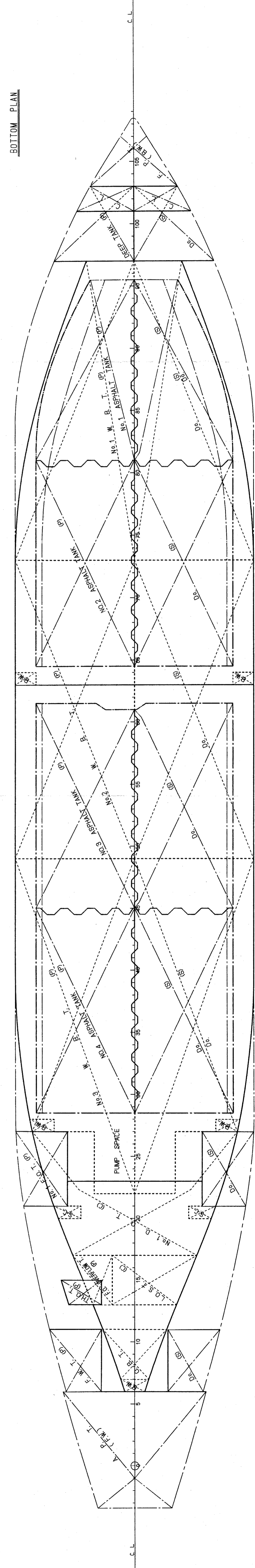
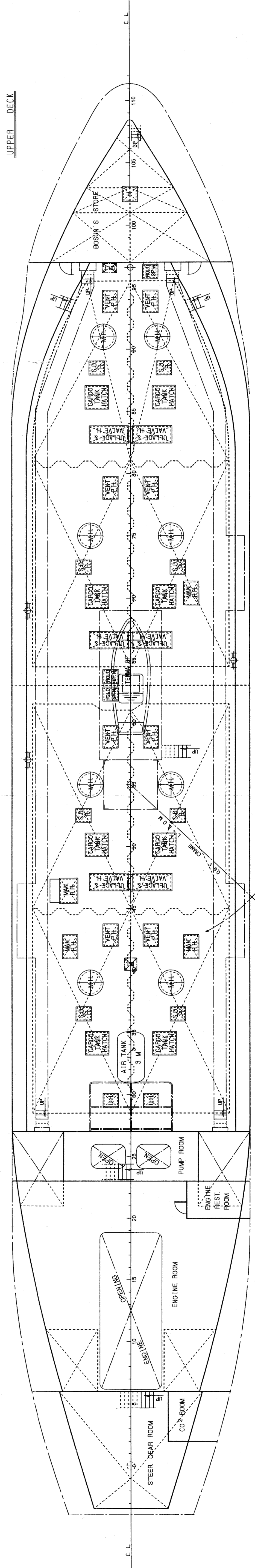
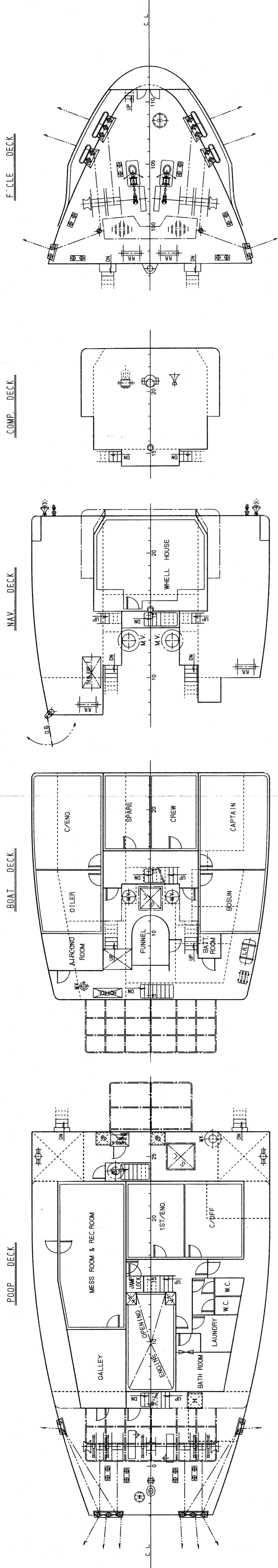
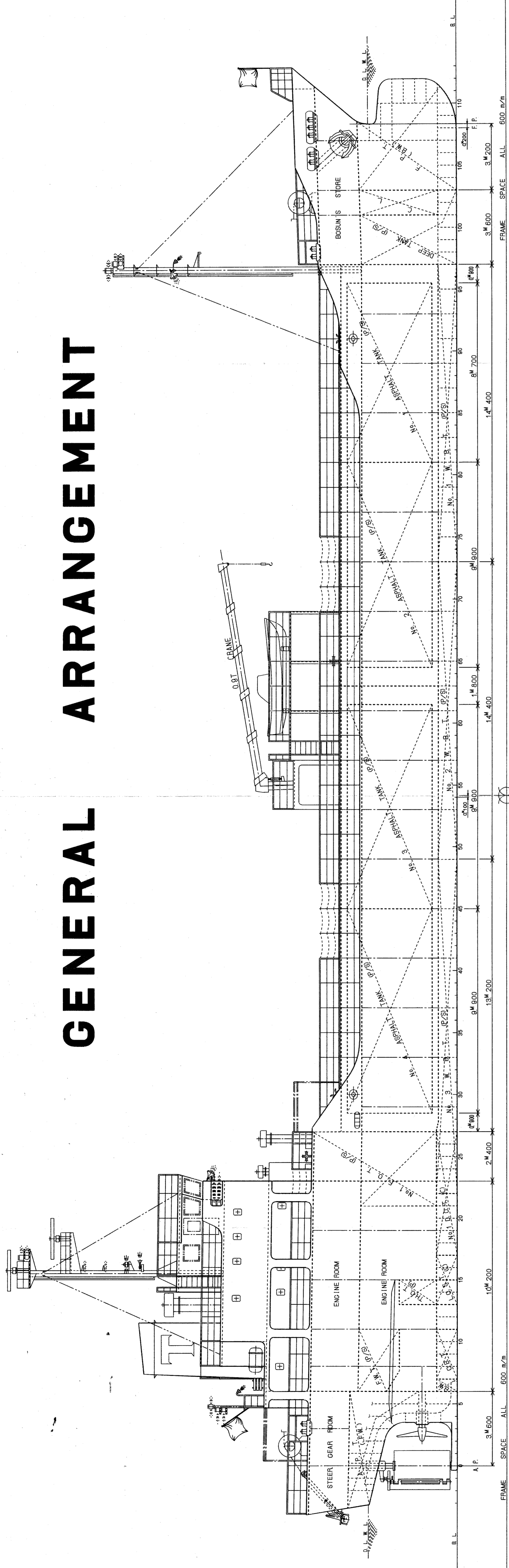


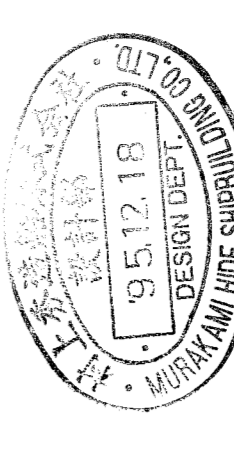
GENERAL ARRANGEMENT

PRINCIPAL DIMENSIONS

LENGTH (O.A.)	62'9.0
LENGTH (P.P.)	62'4.0
BREADTH (M.L.B.)	11'5.0
DEPTH (M.L.B.)	4'6.0
DRAFT (EXT.)	4'28.2
GROSS TONNAGE	749 T
DEAD WEIGHT	1486.4 T
TANK CAPACITY (DIESEL)	1412.306 MG
MAIN ENGINE (TRIAL MAX)	1800 HP
SPEED (SEA SERVICE)	11.70 KNOTS
COMPLEMENT	8 P
NAVIGATION AREA	COASTING SERVICE
CLASS	NK (NK (C.S.) (Asphalt Carrier)) (GD) MNSK



完成図



SNO 376	G/T 749 T	CHIEF OF DEP	
山岡汽船株式会社	ASPHALT TANKER	CHIEF OF SECT	
第十一号栄丸		CHIEF OF PMT	
一般配置図		CHECKED BY	
SCALE 1/100	MURAKAMI HIDE	DRAWN BY	T. KAMEI
	SHIP BUILDING CO., LTD.	DATE	8th February 1965
	C-03		